



The Arundel, Skylarks, Rottingdean, BN2
Offers In Excess Of £850,000

ASTON
VAUGHAN
Sales and Lettings

INTRODUCING

Skylarks, BN2

3 Bedrooms | 2 Bathrooms | 2 Living Rooms
1390 Sq Ft inc Garage | Rottingdean

Nestled into the South Downs at Rottingdean in East Sussex, the luxury development of Skylarks enjoys the tranquillity of the countryside, fresh sea air, and easy access to the city-life of Brighton & Hove just four miles along the coast.

Designed to blend in with their countryside surroundings, the houses of Skylarks are built using natural materials, echoing the historic buildings of Rottingdean Village, famed for its smuggler history and gracious windmill sitting atop the hill looking out to sea. Flint and brick facades, timber cladding and slate roofs could be from another era, yet these houses have been built to the highest contemporary specifications using cutting edge technologies, ready for the modern lifestyle.

- Semi-detached luxury newly built home in the East Sussex countryside
- Newly built using the finest quality fittings and Smart Home technology
- On-site parking and a detached garage
- Nestled into the South Downs
- 3 double bedrooms and 2 bathrooms (1 en suite)
- Lawn garden with patio for dining
- Close to Roedean and Brighton College Private Schools





ASTON
VAUGHAN

Arundel is an exquisite, semi-detached home with three beautifully appointed double bedrooms and two bathrooms, to include an ensuite to the principal room. The ground floor has been designed with entertaining in mind, offering flowing, open plan spaces, set to impress. With a decorative red-brick and black timber clad facade, it feels every inch the country abode, while inside, the feel is contemporary, yet homely, using soft wood finishes and a warm neutral palette in each uniquely styled room bringing calm and cohesion throughout.

Parking is never an issue with both a forecourt and a single detached garage with an automated steel garage door, a quarry tiled floor and an electric car charging point – eco design all the way.

Stepping inside through the solid, engineered hardwood front door, you are welcomed into a beautiful entrance hall with wood effect tiled flooring, heated from below which runs seamlessly over thresholds to the glamorous kitchen and dining room ahead. To the left is the sitting room which becomes a place of sanctuary and comfort after a long day, with soft carpet and ample space for sumptuous furnishings.

Sweeping into a luxury lifestyle, the kitchen, dining and family room is the heart of the home with clearly defined areas for kicking back with a movie, family suppers and for creative cooking in the streamlined kitchen. Luxury integrated Miele appliances in matt black come as standard in these homes, alongside a Quooker hot water and chilled filter water tap. Slab doors in a combination of oak veneer and lacquer finishes, with integrated handles sit above and below composite stone worktops with waterfall side panels to the kitchen island. From here, a wall of bi-folding, aluminium doors open to reveal the Indian sandstone patio and landscaped garden which becomes a natural extension of the home during summer, where the party can continue well into the evening as the sun sets over the hill.

Returning into the house, the first-floor bedrooms are beautiful doubles with soft carpet underfoot and green and leafy views from each window. Smart technologies continue on this floor with the Control4 Smart Home system controlling Lutron lighting, window blind systems, audio, heating, and video doorbell via a room keypad – or from the comfort of your bed. The principal bedroom is ensuite, while bedrooms two and three have easy access to the main bathroom across the landing. All bathrooms come fitted with Duravit and Kaldewei sanitaryware, matt-black fittings and porcelain wall and floor tiles in a range of high-end, luxurious finishes which will stand the test of time.





Builder's comments:

"We take great care to understand the lifestyle aspirations of our community and create exceptional residences in prime areas. Our attention to every detail ensures we deliver beautiful homes that enrich your quality of life at home, work, school, and play. Brookworth Homes chooses development sites carefully to maximise transport links; proximity to vital local amenities; and a rich variety of sports, leisure, and recreational facilities. Each home comes with a Brookworth Homes two- year warranty in addition to the standard NHBC Build Warranty. We require all our contractors and subcontractors to adhere to the Consumer Code for Homebuilders to ensure quality at every stage of the build process."





ASTON
VAUGHAN
Colour and texture

LOCATION GUIDE

On the edge of the South Downs National Park, Rottingdean is a prestigious village suburb just 10-minutes east from the City of Brighton & Hove. Surrounded by Downland as it sweeps down towards the coast, this area is perfectly placed to access both, yet it is also well connected to the city with excellent transport links both in and out.

Rottingdean is sought after by professionals and families. There's a local beach with sand and rock pools; a café and an active, friendly community centred around the local High Street, Pond and several desirable gastro pubs and eateries. Good schools are easy to reach by bus, cab or car - or you can walk or ride to them over fields. Keeping options open, the shops, cafes, library and primary schools of Woodingdean are also easy to reach. Brighton, Lewes, Gatwick and London are all commutable, and buses run to stations at Falmer and Brighton.

Good to Know

Shops: 10 minute walk to local shop, 12 minute cab ride to central Brighton - 28 mins by bus

Train Station: Brighton Station 13 min drive / 30 mins by bus

Seafront or Park: South Downs walks on the doorstep, Happy Valley Park 12 minutes walk and Rottingdean beach 30 mins walk / 7 mins by bus

Education

Primary: St Margaret's, Rudyard Kipling, Woodingdean Primary

Secondary: Longhill High School, Cardinal Newman RC

Sixth Form: BHASVIC, East Sussex College

Private: Brighton College, Brighton College Prep, Roedean, Brighton Steiner

Floor plan



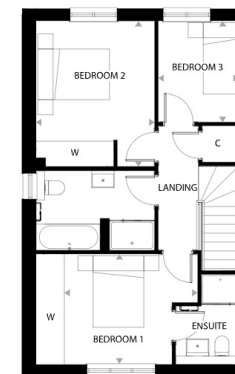
GROUND FLOOR FIRST FLOOR

Ground Floor

Kitchen / Dining / Family 5390mm x 5125mm

Living Room 3165mm x 4470mm

**Denotes the maximum measurement of room*



GROUND FLOOR FIRST FLOOR

First Floor

Bedroom 1 3653mm x 2935mm

Bedroom 2 3150mm x 3870mm

Bedroom 3 2145mm x 2690mm

**Denotes the maximum measurement of room*