



Apartment (EPC Rating:)

**TFF, 30 VERNON TERRACE, BRIGHTON,
BN1 3JH**

Per Month

£1,550 Per

**ASTON
VAUGHAN**
Sales and Lettings



1 Bedroom Apartment located in Brighton

Situated on the top floor, this charming one-bedroom flat offers an ideal living space for those seeking comfort and convenience. The property boasts a delightful balcony, perfect for enjoying the fresh sea air and the lively atmosphere of the area.

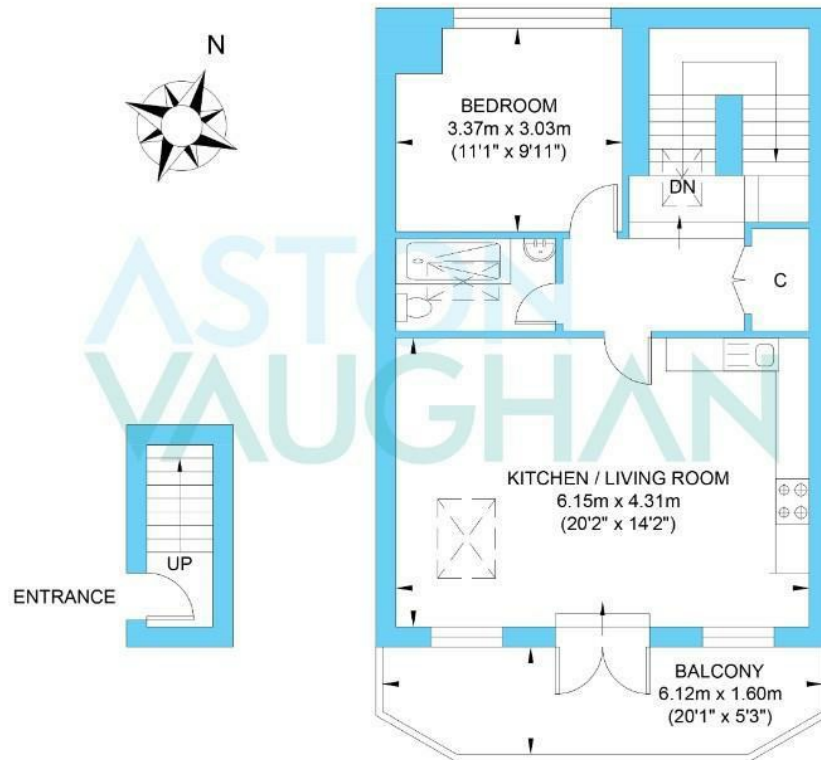
The flat comes fully furnished, ensuring that you can move in with ease and start enjoying your new home right away. The interior is designed to provide a warm and inviting environment, making it an excellent choice for individuals or couples looking for a cosy retreat.

One of the standout features of this property is its superb location. You will find yourself surrounded by a plethora of local amenities, including shops, cafes, and restaurants, all within easy reach. Additionally, the flat is just a short walk from Brighton Station, providing excellent transport links for those commuting or exploring the wider region.

This property presents a wonderful opportunity to experience the best of Brighton living, combining comfort, style, and accessibility in one attractive package. Don't miss the chance to make this delightful flat your new home.



Vernon Terrace



Council Tax Band

Energy Performance Graph

Energy Efficiency Rating		
	Current	Potential
Very energy efficient - lower running costs		
(92 plus) A		
(81-91) B		
(69-80) C		
(55-68) D		
(39-54) E		
(21-38) F		
(1-20) G		
Not energy efficient - higher running costs		
England & Wales	EU Directive 2002/91/EC	

Call us on

01273 253000

info@astonvaughan.co.uk

www.astonvaughan.co.uk

Agents Note: Whilst every care has been taken to prepare these particulars, they are for guidance purposes only. All measurements are approximate and are for general guidance purposes only and whilst every care has been taken to ensure their accuracy, they should not be relied upon and potential buyers are advised to recheck the measurements.